

# Sweet Savior Mine



1. Sweet Sav - ior mine, so full, so free, Thy par-d'ning love has been to me;  
2. Sweet Sav - ior mine, Thy feet to kiss In ser - vice low is high - est bliss;  
3. Sweet Sav - ior mine, can I with - hold The tri - fling deed, the pal - try gold?

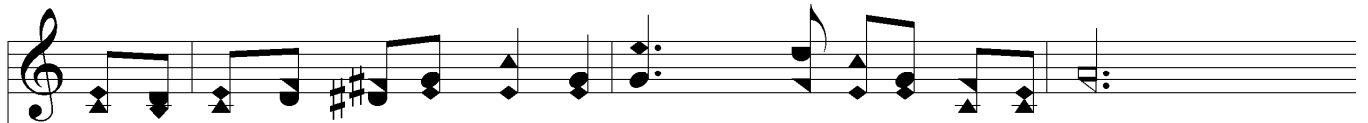
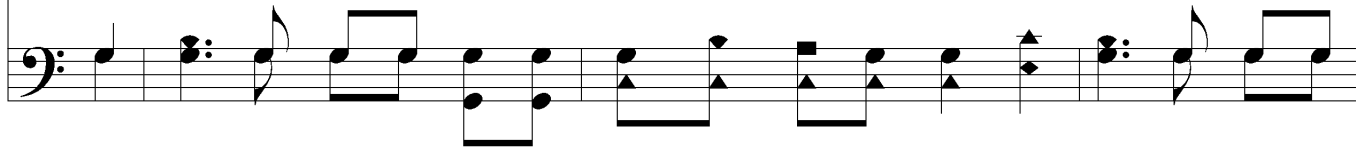


Were I pos - sessed of bound - less store, My heart would long to yield Thee more.  
Oh, give to me one glance of Thine, And pain for Thee is joy di - vine.  
Nay, low - ly at Thy feet I fall, Sweet Sav - ior mine, I give Thee all.

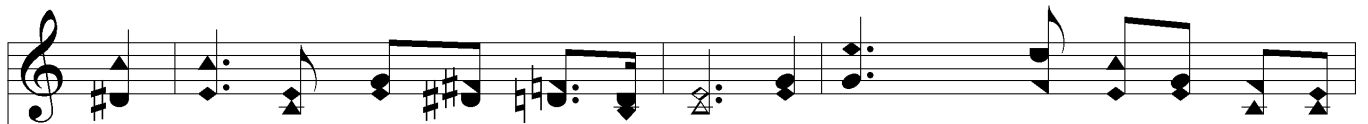
## Chorus



The world is naught a - part from Thee, sweet Sav - ior mine, And cruds are king - ly



fare for me since I am Thine; My life, my all, to Thee I give,  
My life, my all, to Thee I give, to Thee I give,



Sweet Sav - ior mine, for Thee to live. My life, my all, to Thee I  
My life, my all, to Thee I



# *Sweet Savior Mine*

give,  
give, to Thee I give,  
Sweet Sav - ior mine, for Thee to live.

The image shows a musical score for the hymn "Sweet Savior Mine". It consists of two staves: a treble clef staff on top and a bass clef staff on the bottom. The treble staff contains the melody, starting with a treble clef and a key signature of one sharp (F#). The lyrics are written below the treble staff. The bass staff contains the accompaniment, starting with a bass clef and a key signature of one sharp. The music is in a common time signature (C). The score ends with a double bar line.