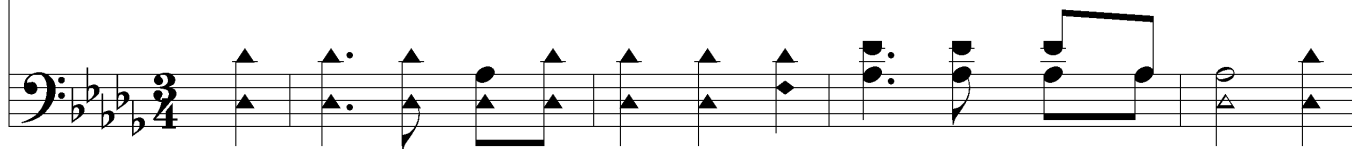


Oh, Theme Of Blest Salvation!

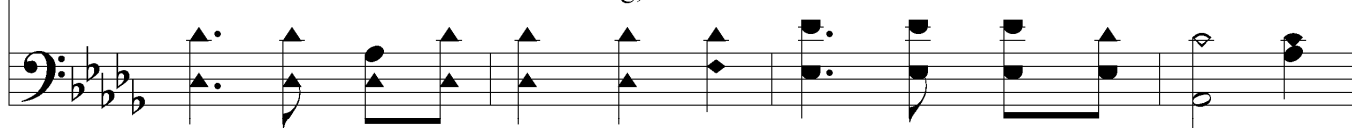
HAPPY IN MY SAVIOR



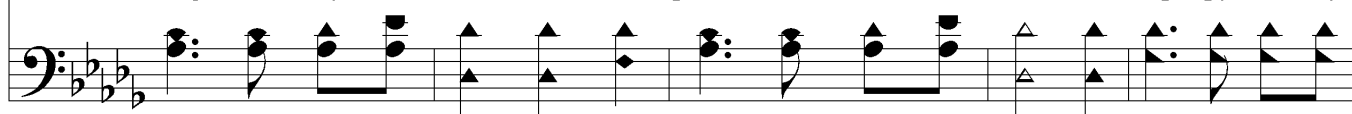
1. Oh, theme of blest sal - va - tion! My rap - tured tongue shall sing, And
2. My soul with love re - joic - es From morn - ing un - til night; My
3. His grace is all a - bid - ing, His pit - y pass - ing sweet; My



sound the proc - la - ma - tion, Till dis - tant isles shall ring; My
tongue His glo - ry voic - es, And thrills with pure de - light, I
heart in Him is hid - ing, - A calm and sure re - treat. Blest



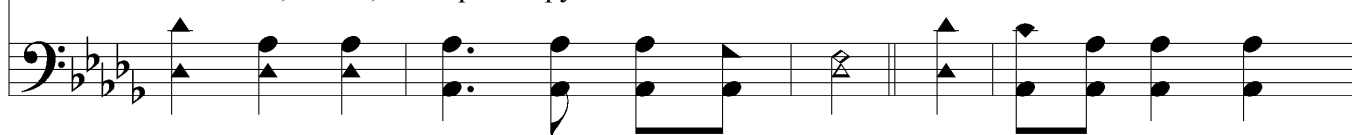
Sav - ior lives and loves me, Oh, pre - cious, pre - cious tho't! I'm hap - py in my
know that He is with me, Wher - ev - er I may be; - I'm hap - py in my
King of my sal - va - tion, I'll praise Him o'er and o'er! I'm hap - py in my



Chorus



Sav - ior, His blood my soul has bought. I'm hap - py, so ver - y
Sav - ior, He's all in all to me. I'm hap - py, oh, so
Sav - ior, Yes, hap - py ev - er - more.



Oh, Theme Of Blest Salvation!

hap - py— I'm hap - py all a - long the way! I'm
ver - y hap - py, I'm hap - py in my Sav - ior all a - long the way, I'm

The first system of the hymn features a treble and bass staff. The treble staff contains the vocal melody with lyrics underneath. The bass staff provides a harmonic accompaniment. The key signature is three flats (B-flat, E-flat, A-flat) and the time signature is 4/4. The melody begins with a half note G4, followed by quarter notes A4, B4, and C5, then a half note D5, and continues with a descending line of quarter notes: C5, B4, A4, G4, F4, E4, D4, C4.

hap - py, so ver - y hap - py in Je - sus all the day!
hap - py, oh, so ver - y hap - py in Je - sus, hap - py all the day!

The second system continues the melody and accompaniment. The treble staff shows the vocal line with lyrics. The bass staff continues the accompaniment. The melody concludes with a half note G4, followed by quarter notes A4, B4, and C5, then a half note D5, and continues with a descending line of quarter notes: C5, B4, A4, G4, F4, E4, D4, C4.